

CAN YOU SEE BENEATH THE SURFACE?

Before you cite an image like the one below, you need to know a few things.

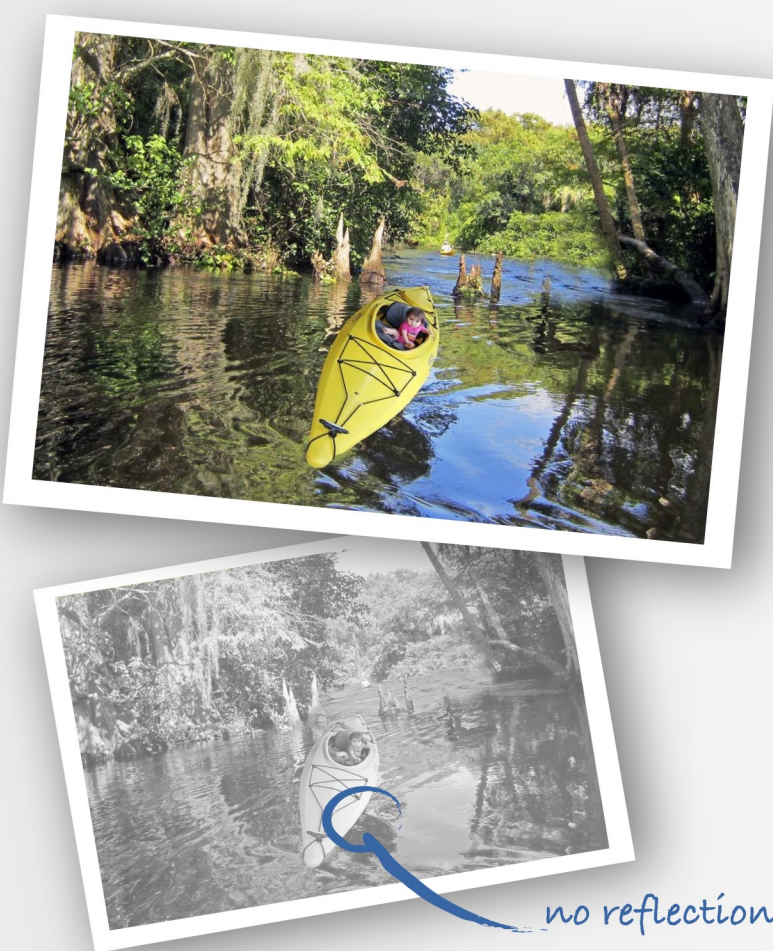
START BY ASKING YOURSELF THESE IMPORTANT QUESTIONS

What do I see?
A baby in a kayak on a river!

Does this make sense?
Not really. Babies shouldn't be in kayaks by themselves, especially without paddles! This image may have been altered.

Why or why not?
The content of the image doesn't make sense and looks a little off.

What might be missing?
There are no reflections or ripples in the water from the kayak. The kayak was digitally added to the image. Thank goodness for the baby.



We call an online image **BORN DIGITAL** if it was created in digital form, or if you do not know where the image itself is physically stored.

HAS A BORN DIGITAL IMAGE BEEN ALTERED? FOUR TESTS TO CHECK

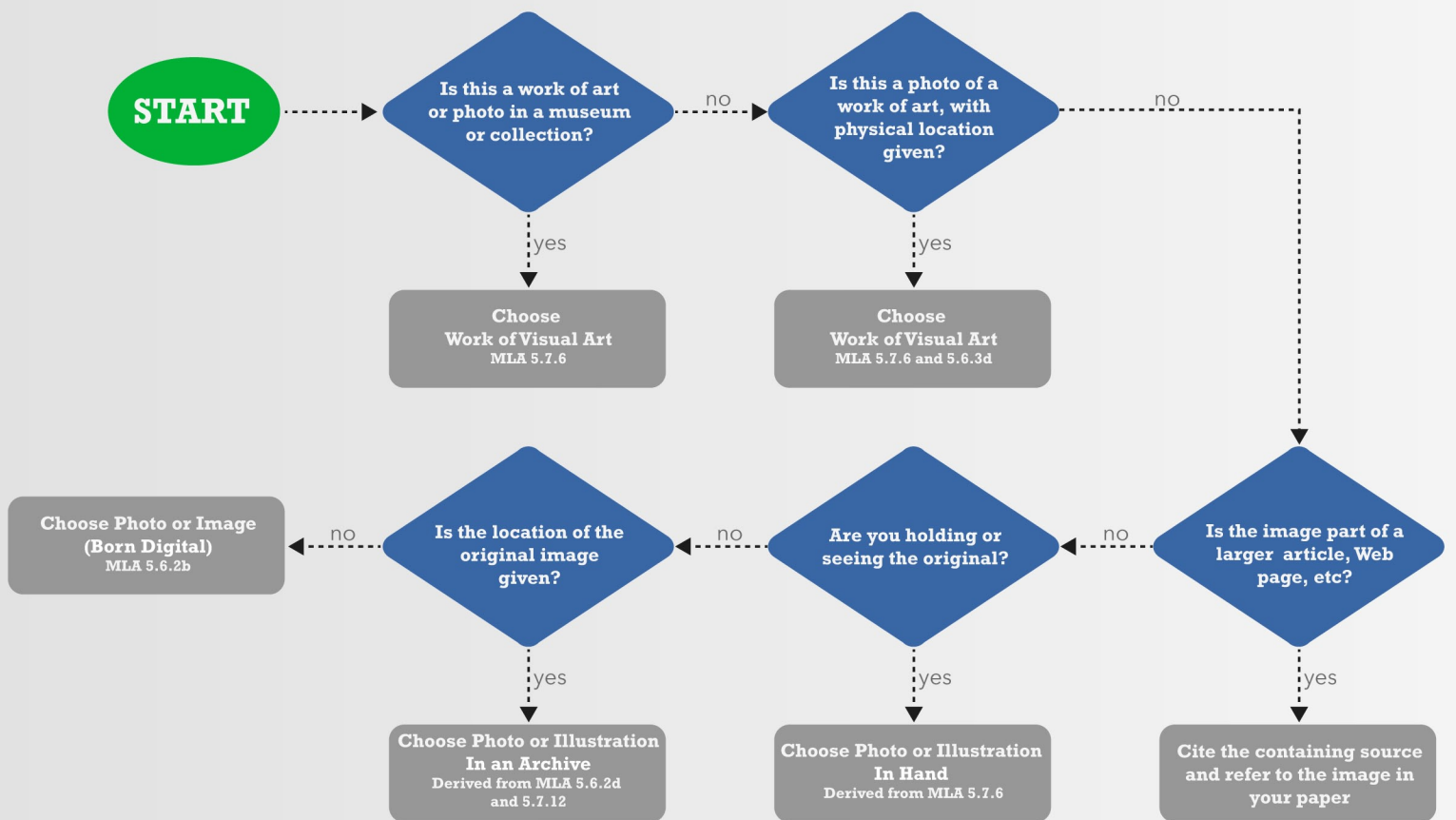
Use an image search engine to compare your image/photo with others. <http://noodle.to/showmephotol>

Check for metadata. The absence of metadata can be evidence of photo editing. <http://noodle.to/showmephoto2>

Locate the small white dot (a reflection of the light source) in the eyes of each person. <http://noodle.to/showmephoto3>

Compare shadows of similar objects to check consistency. Draw lines to check the light source. <http://noodle.to/showmephoto3>

CITING A PHOTO, IMAGE OR WORK OF ART IN NOODLETOOLS (MLA ADVANCED)



Visit the NoodleTools website for information-literacy support, and tools to help cite even the trickiest sources.

www.noodletools.com